

Installation Guide

— Philips TrueForce LED Road Lamp



Please take the time to read this installation guide. The guide contains important information and notes regarding the installation and operation.

IMPORTANT!

- The product functions as HID lamp in road lighting application, such as high pressure sodium lamp (50/70W), metal halide lamp (50/70W) and high pressure mercury lamp (80W).
- The product is designed to fit in standard IEC compliant E27 lamp holders.
- Always switch off the power supply before commencing work!
- Please read the installation instructions carefully to ensure safety.
- The product is not dimmable.
- The product is not compatible to use with electronic ballast.
- This product is not used to mains voltage directly.
- Suitable for use in operating temperature range between -40°C to +45°C.
- Do not change the structure or any components of the product to ensure safety.
- The product should be installed by professional electrician.
- Perform inspection before installation to ensure the luminaire and lamp holder are in good condition to carry the weight and performance of the product.
- Use the enclosed luminaires only, recommend to use in the luminaire with IP₂X4 to ensure maximum product life.
- Use in horizontal ± 15D burning position only.
- Please do not apply the product in applications which contains emergency or/and explosive proof luminaires.
- The total system performance may vary depending on the lighting/luminaire system.
- For latest information, please refer to www.philips.com/lighting.
- In case of doubt, please consult Signify representative.
- The minimum dimensions requirement on lamp compartment is (L x ø) 220mmx170mm. Please check the Tc temperature in application guide for best performance.
- Do not install any lamp which is deformed or damaged from transportation or handling.
- Compatible with EM ballasts 50Hz only.
- Keep lamps clear during application (esp. no oil contamination on glass tube), to ensure good lamp performance.

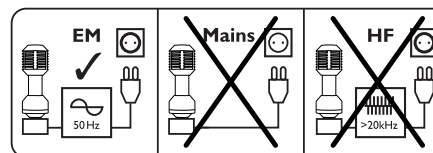
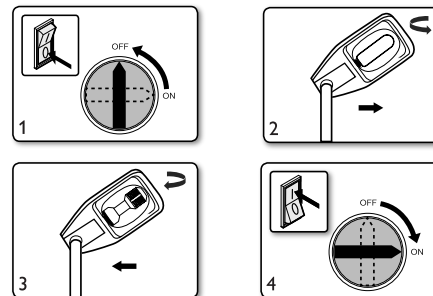
DISCLAIMER:

Signify disclaims liability for any direct, indirect or incidental damages in case of installation performed either not according to this guide or not performed by a professional electrician.

CE RoHS COMPLIANT IP40

PHILIPS

Die-Cut: A4 size 正反面单色印刷



SYMBOL	MEANING
	LAMP SUITABLE FOR 50Hz OR 60Hz OPERATION
	NEED TO BE USED IN DRY CONDITIONS OR IN A LUMINAIRE THAT PROVIDES PROTECTION



© 2018 Signify Holding
@Signify

All rights reserved. Reproduction in whole or in part is prohibited without the prior written consent of the copyright owner. The information presented in this document does not form part of any quotation or contract, is believed to be accurate and reliable and may be changed without notice. No liability will be accepted by the publisher for any consequence of its use. Publication thereof does not convey nor imply any license under patent or other industrial or intellectual property rights.

11/2018
www.philips.com/lighting

3241 653 83901

PHILIPS LIGHTING			
Brand	Philips		
Product Family	HIB & New Application		
Shape			
Waistage			
Template Ref.	N/A		
SGS number	5590927		
13-NC-NBR	324165383901		
Masterdrawing	N/A		
CRC Ref.			
Barcode No.	N/A		
Operator(s)	JDEP		
VERSION No.	v1		
Date in	20150514		
Date amended	20181129		
Cyan	Magenta	Yellow	Black
Print			
Diecut			
Date Check			
<input type="checkbox"/> Check briefing Traffic			
Artwork document			
<input type="checkbox"/> Legend	<input type="checkbox"/> Number of colors		
<input type="checkbox"/> 12NC	<input type="checkbox"/> Trapping/Bleed		
<input type="checkbox"/> Barcode	<input type="checkbox"/> Images hires		
<input type="checkbox"/> Diecut	<input type="checkbox"/> Jobsizes		
Approval			
<input type="checkbox"/> QC Lithographer	SGS Shanghai Production		
<input type="checkbox"/> Product Manager	xiaowen.wang@signify.com		
<input type="checkbox"/> Traffic Manager	Neal Yan		

Document Info	Code 12NC:	Designer:	Duplexbox:	Author	Date	Change number	Revision description
	324165383901	SH SGS	324165383901	SH SGS	2018/11/30		
		Design date:	EANI number: N/A				
		2018-11-30	Die-Cut: N/A				
	Description:		Surface treatment: N/A				
	TForce LED Road 55-35W E27 730		CRC: CRC000				