

## Installation Guide

### — Philips TrueForce LED Road Lamp

Please take the time to read this installation guide. The guide contains important information and notes regarding the installation and operation.

#### IMPORTANT!

- The product works ONLY with an existing ElectroMagnetic (EM) gear (refer to TrueForce LED lamps ballast – igniter compatibility list). No need to rewire or modify the luminaire, ignitor can stay in the system.
- The product is designed to fit in standard IEC compliant E40 lamp holders.
- Always switch off the power supply before commencing work!
- Please read the installation instructions carefully to ensure safety.
- The product is not dimmable.
- The product is not compatible with electronic gear.
- The product DOES NOT work on Direct Mains.
- Suitable for use in operating temperature range between -40°C to +45°C.
- Do not change the structure or any components of the product to ensure safety.
- The product should be installed by professional electrician.
- Perform inspection before installation to ensure the luminaire and lamp holder are in good condition to carry the weight and performance of the product.
- The product fulfills IP40 requirements, outdoor applications require the lamp to be used in luminaires with suitable IP rating.
- Please do not apply the product in applications which contains emergency or/and explosive proof luminaires.
- The total system performance may vary depending on the lighting/luminaire system.
- For latest information, please refer to [www.philips.com/lighting](http://www.philips.com/lighting).
- In case of doubt, please consult Philips representative.
- The minimum dimensions requirement on lamp compartment is (L x ø) 280mmX180mm. Please check the Tc temperature in application guide for best performance.
- Do not install any lamp which is deformed or damaged from transportation or handling.
- Compatible with EM ballasts 50Hz only.
- Keep lamps clear during application (esp. no oil contamination on glass tube), to ensure good lamp performance.

#### DISCLAIMER:

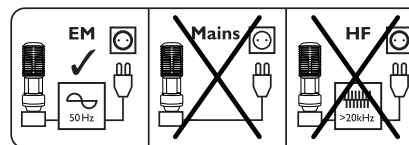
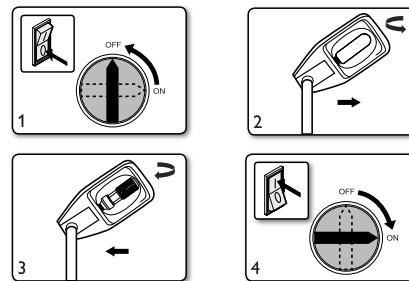
Signify disclaims liability for any direct, indirect or incidental damages in case of installation performed either not according to this guide or not performed by a professional electrician.

CE RoHS COMPLIANT IP40

PHILIPS



## SON/HPL lamps with EM gear



SYMBOL	MEANING
	LAMP SUITABLE FOR 50Hz OR 60Hz OPERATION
	NEED TO BE USED IN DRY CONDITIONS OR IN A LUMINAIRE THAT PROVIDES PROTECTION



© 2018 Signify Holding  
Signify

All rights reserved. Reproduction in whole or in part is prohibited without the prior written consent of the copyright owner. The information presented in this document does not form part of any quotation or contract, is believed to be accurate and reliable and may be changed without notice. No liability will be accepted by the publisher for any consequence of its use. Publication thereof does not convey nor imply any license under patent or other industrial or intellectual property rights.

12/2018  
[www.philips.com/lighting](http://www.philips.com/lighting)

3241 654 16801

## PHILIPS LIGHTING

Brand Philips  
Product Family LED tube ND  
Shape \_\_\_\_\_  
Wattage \_\_\_\_\_  
Template Ref. NA  
SGS number 5609521  
12-NC.NBR 324165416801  
Masterdrawing NA  
CRC Ref. \_\_\_\_\_

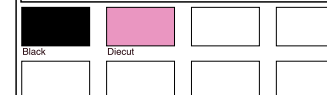
Barcode No. NA

Operator(s) pollypan

VERSION No. **v1**

Date in 20150514

Date amended 20181210



#### Date Check

Check briefing Traffic

#### Artwork document

Legend  Number of colors  
 12NC  Trapping/Bleed  
 Barcode  Images hires  
 Diecut  Jobsizes

#### Approval

QC Lithographer SGS Shanghai Production  
 Product Manager [connie.lh.fan@signify.com](mailto:connie.lh.fan@signify.com)  
 Traffic Manager Neal Yan

Size: 148 \* 210mm 80g 双胶纸, double side prin

Document Info	Designer:	Duplexbox:	Author	Date	Change number	Revision description
Code 12NC: <b>324165416801</b>	SH SGS	324165416801	SH SGS	2018/12/12		
Description:	Design date: 2018-12-12	EANI number: NA				
		Die-Cut: NA				
		Surface treatment: N/A				
		CRC:				